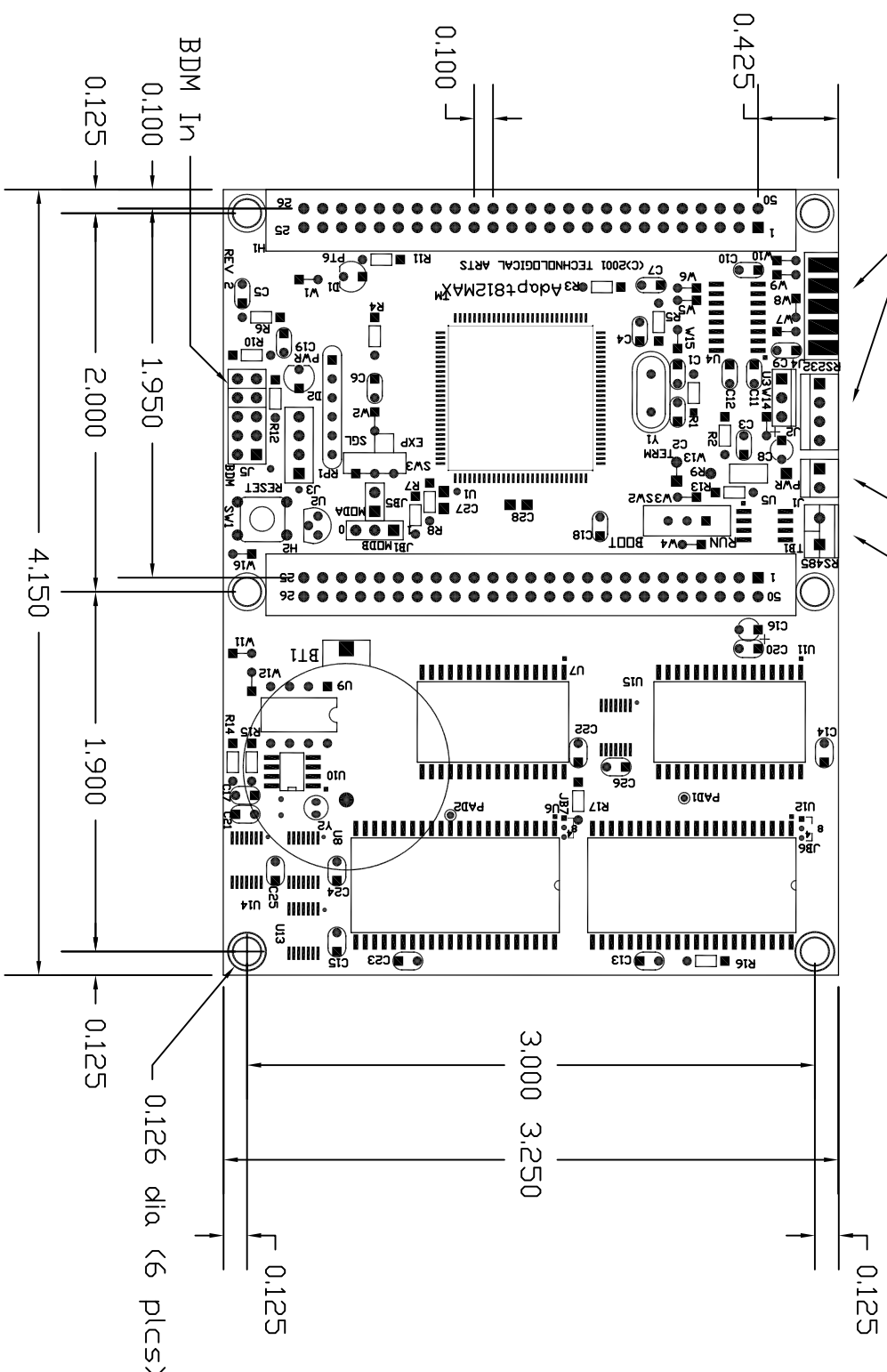


SCIO Serial Port

External Supply  
SC11 RS485 Port



Electrical Specifications:  
 Input Voltage (DC): 5 - 18V (max)  
 Logic Voltage: 5Volts  
 Logic Current: <80mA

ALL MEASUREMENTS ARE IN INCHES  
 NDT TO SCALE

TECHNOLOGICAL ARTS  
 sales@technologicalarts.ca  
 www.technologicalarts.com  
 support@technologicalarts.ca

Title		Adapt812MAX Mechanical	
Size		Document Number	
A		FILE: Adapt812MAX_Mech.dwg	
Date:		Friday, August 06, 2004	
Sheet		1 of 1	
Rev		0	