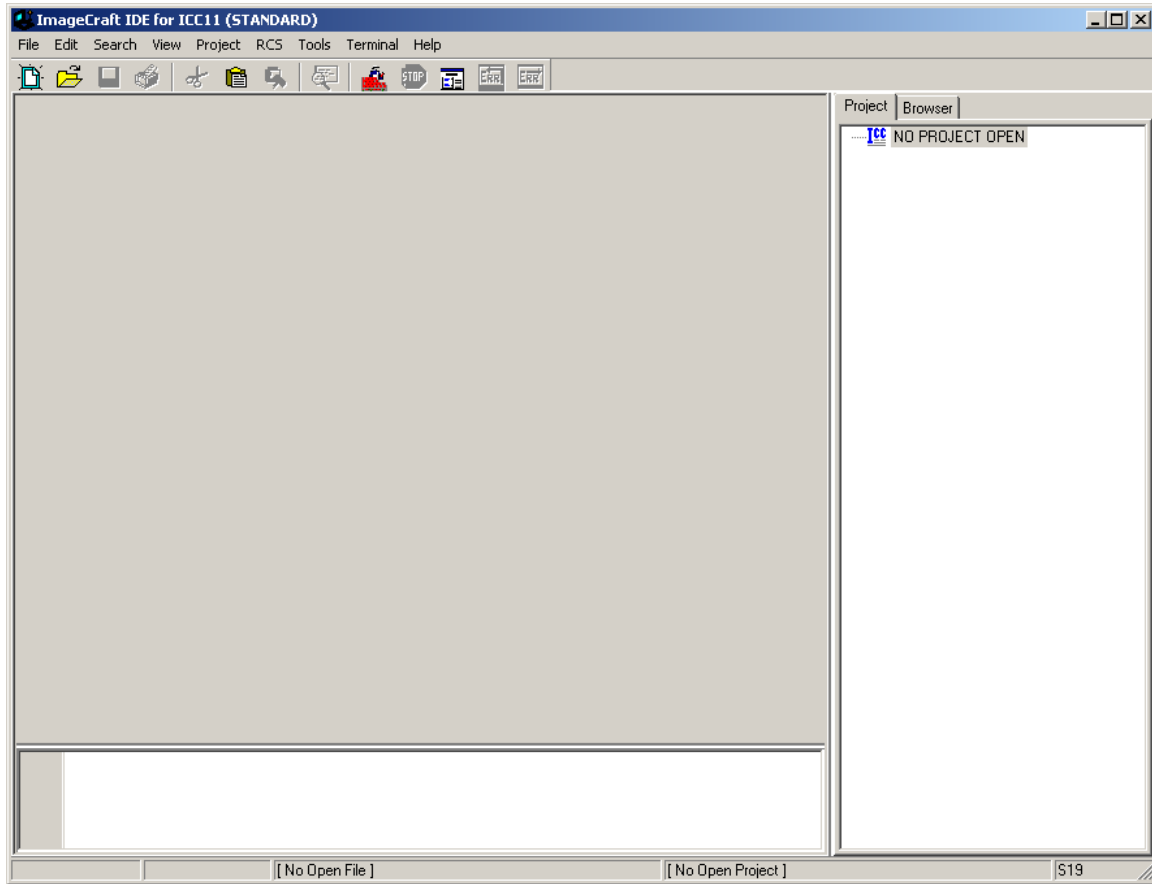


How to use ICC11 with Adapt11, MicroCore11, MicroStamp11 and Adapt11C24DX

This document will show how to use ICC11 with Technological Arts' HC11 product. It will use the already provided "Hello World" Example by ImageCraft.

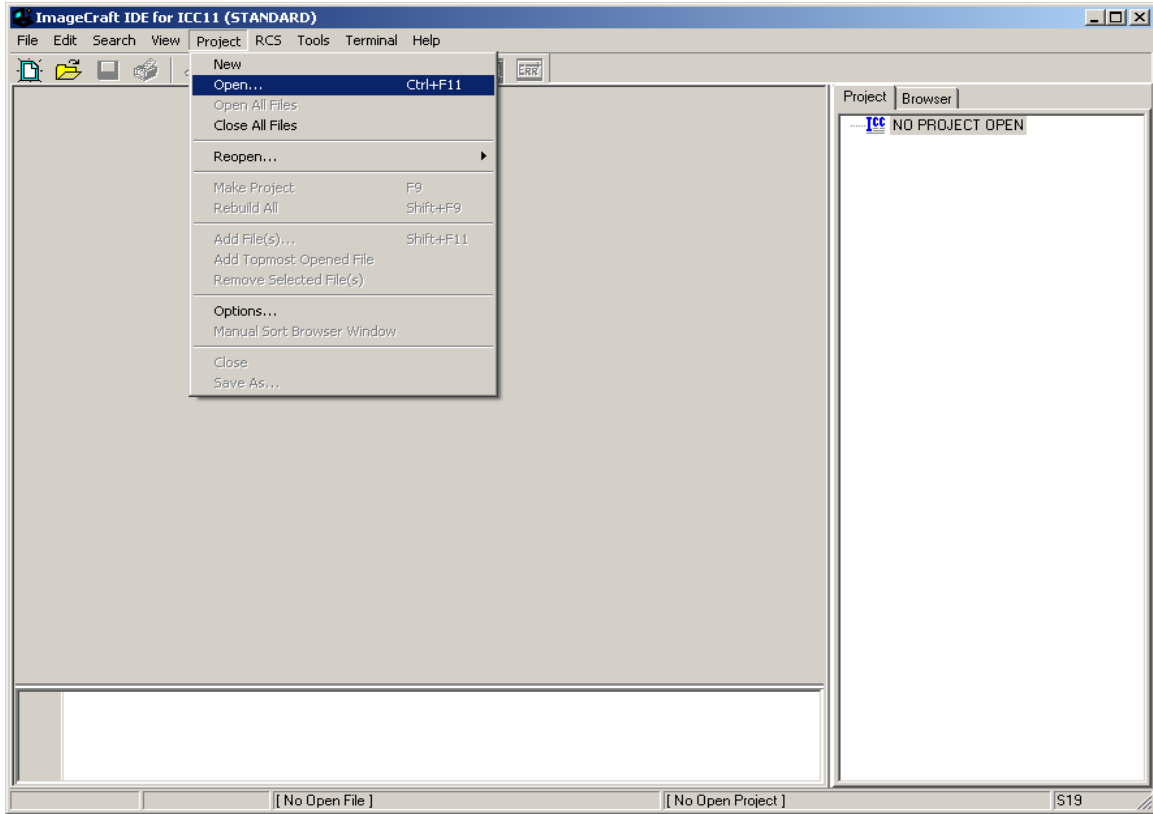
Getting Started:

Open ICC11 IDE as shown.

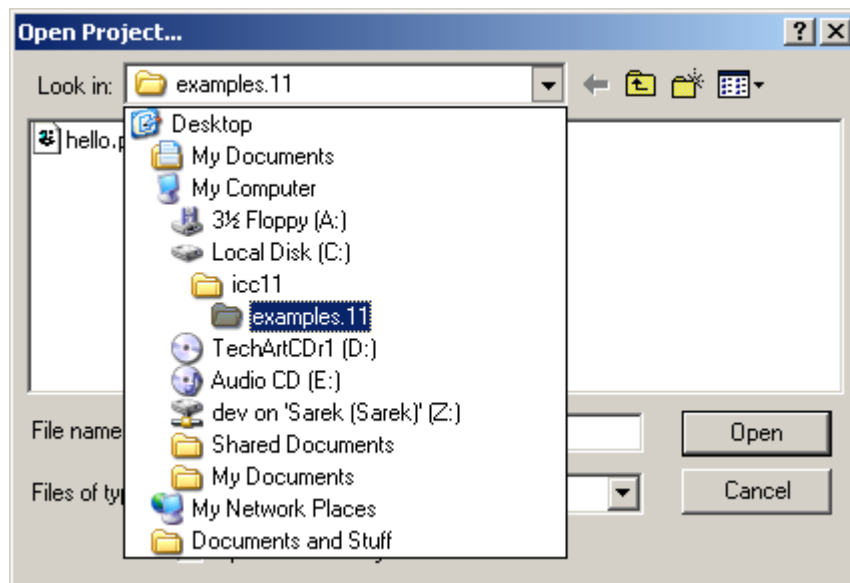


Open existing projects:

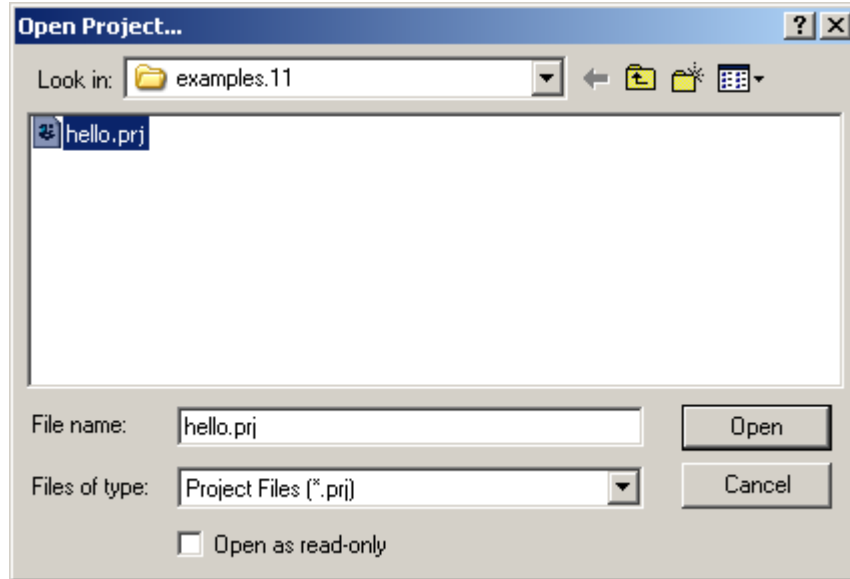
Click on Project menu – Open as shown.



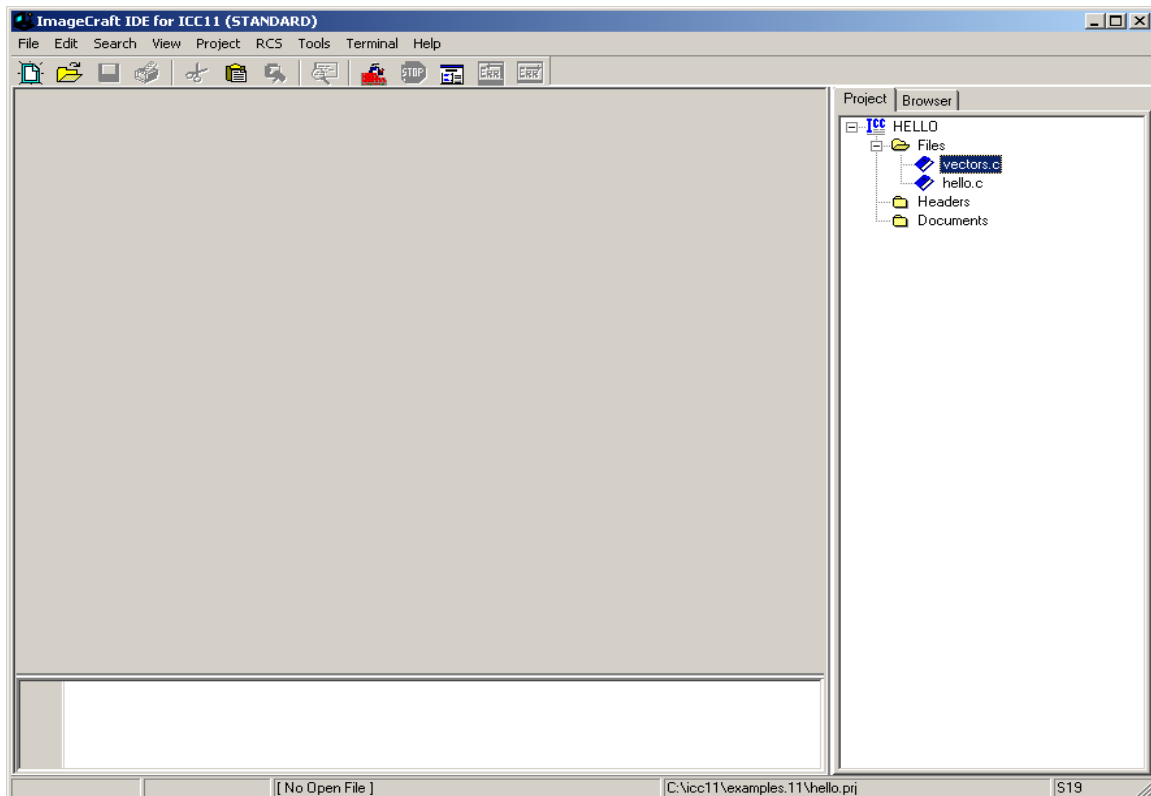
ICC11 will open an explorer window to help locate <hello.prj> It can be found at \\ICC11\examples.11



To select, click on hello.prj then press the *Open* button.



Note that the IDE changed to include vectors.c and hello.c in Project pane.

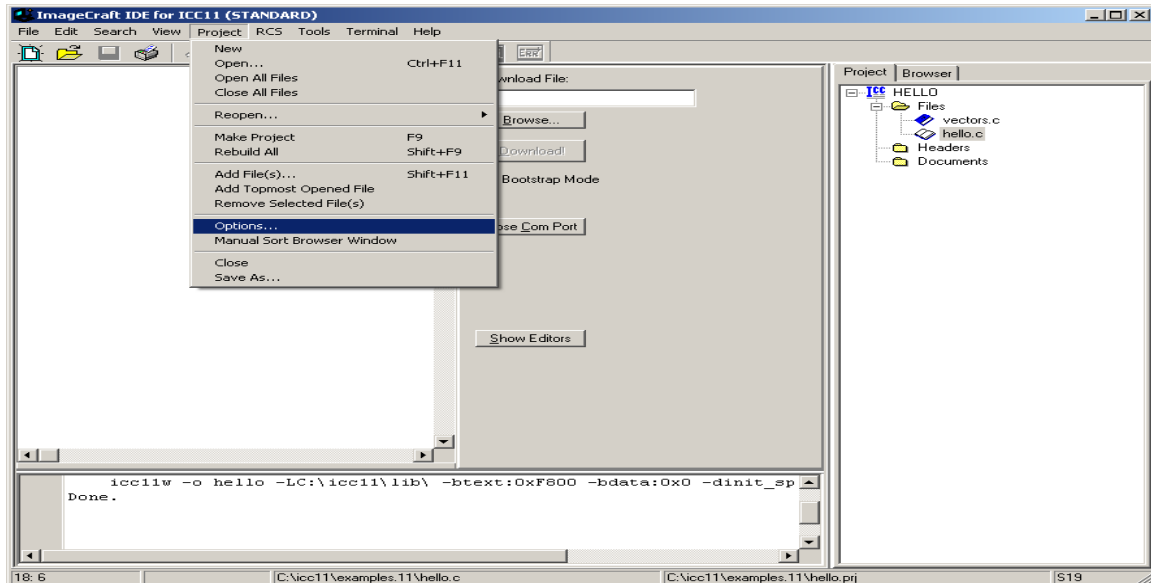


Note that hello.c contains the actual C code to display the Hello World message. Vector.c contains the start of the program.

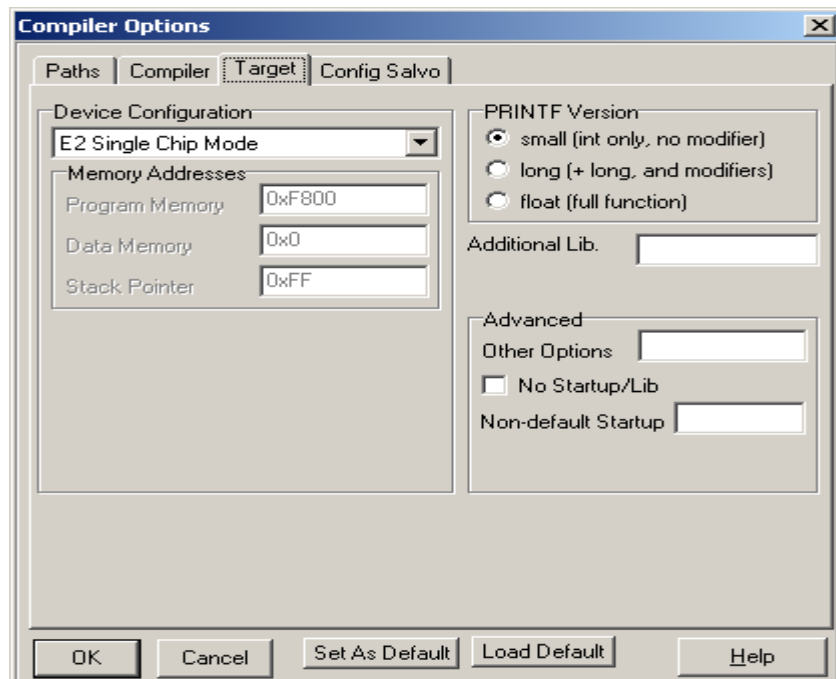
Compiler Options:

The target will be generalized to E2 Single Chip Mode. This is applicable even for HC11 with external memory.

To change click on Project menu – Options then Target tab as shown

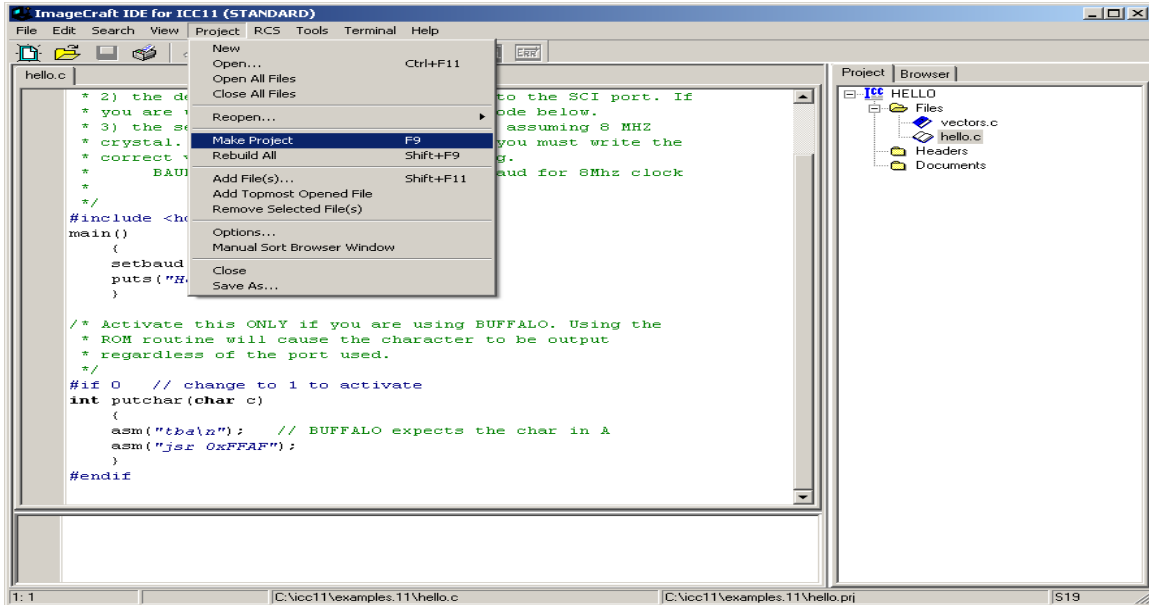


Click on Target Tab to change Device Configuration. In this example, E2 Single Chip Mode is selected. This simply means that the memory resources are in certain locations. It is up to the user to select other modules that has larger memory.

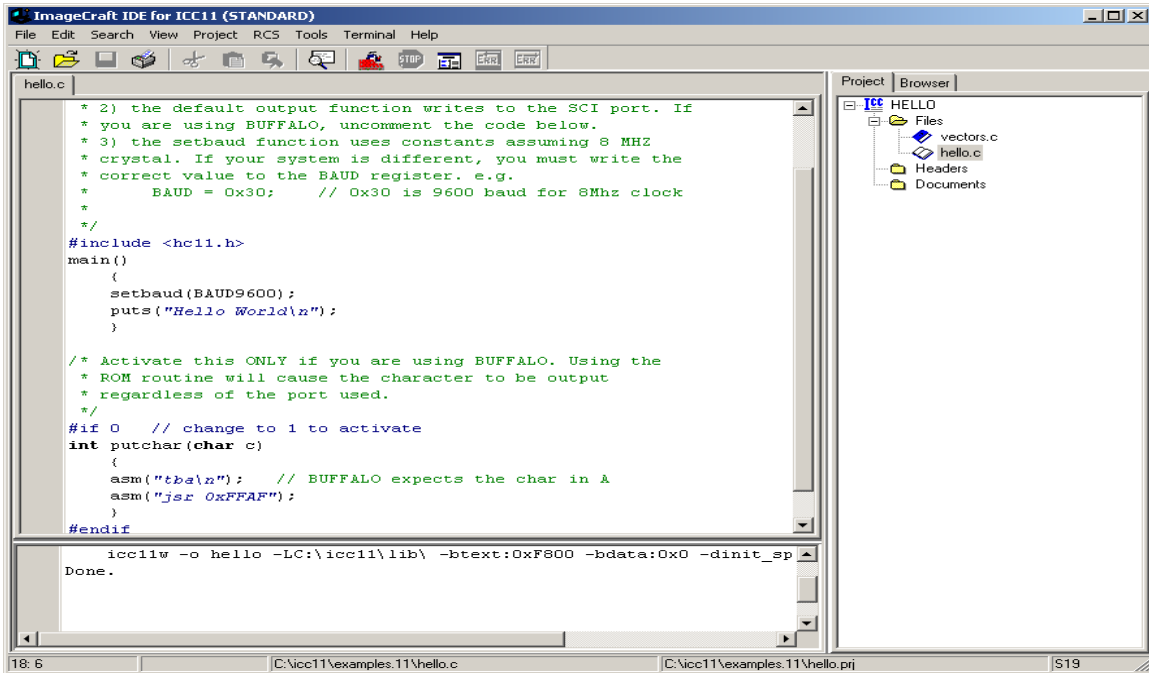


Compile/Build/Make the C code:

To compile select Project menu then Make Project as shown.



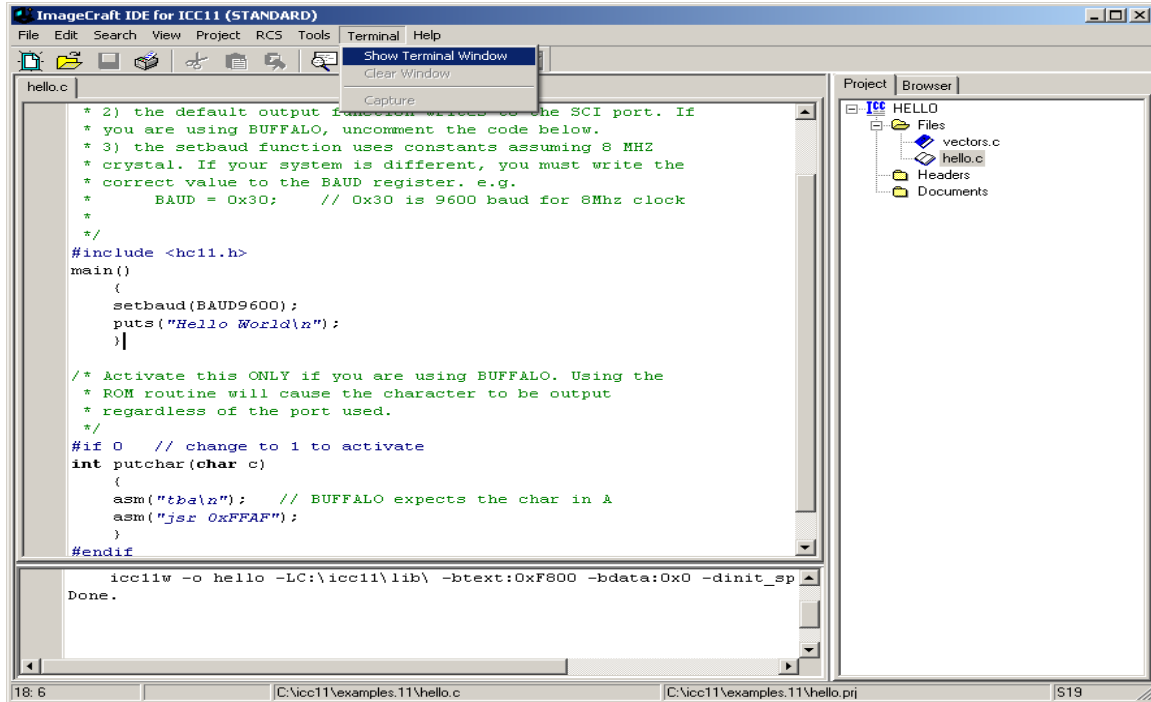
Note that there are no errors shown. Next step is programming the S-record into the HC11.



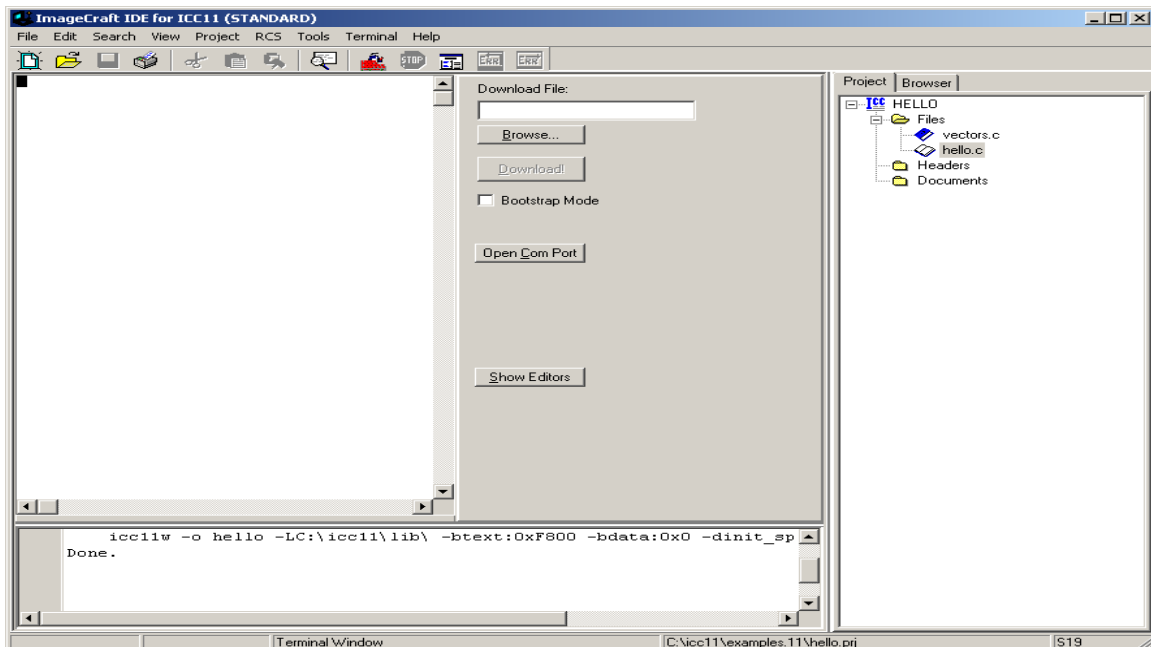
Programming:

In this example, ICC11 is used to program the HC11. Microload can also be used but in this example it is the IC11.

Select Terminal menu then Show Terminal Window as shown.



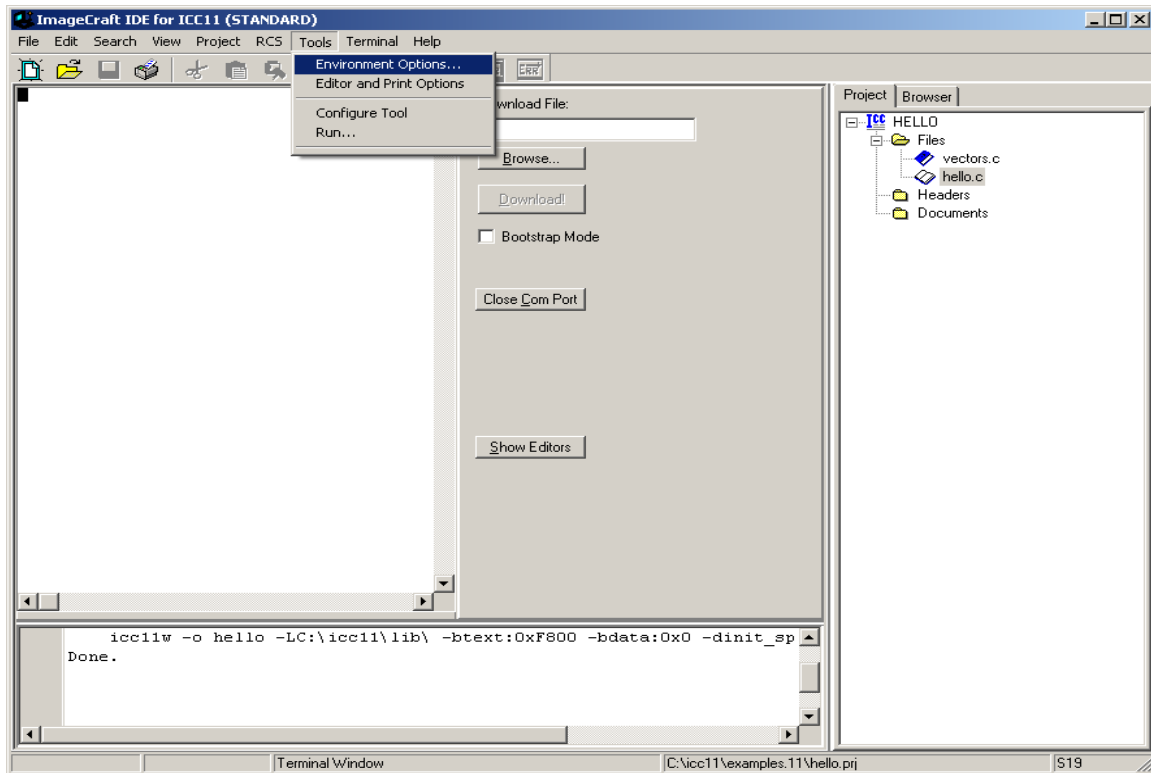
Note that the IDE will change to show Terminal Window.



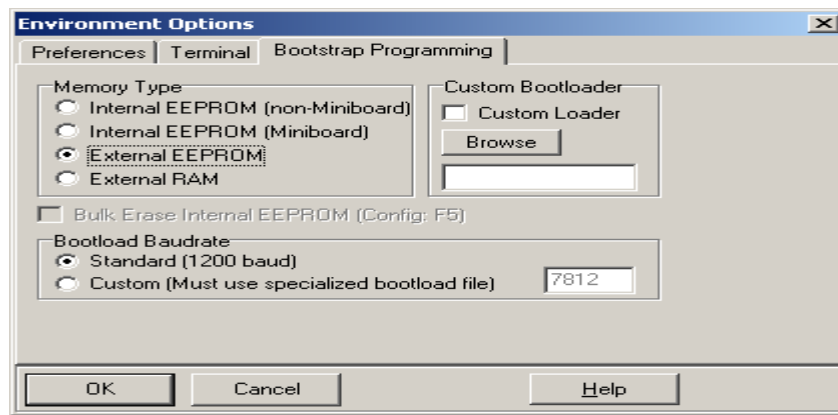
To make COM active press the Open Com Port button in the middle of the IDE. Once pressed, the button will change to message Close Com Port. This means that the PC serial port is open to communicate with the HC11.

Programming Options:

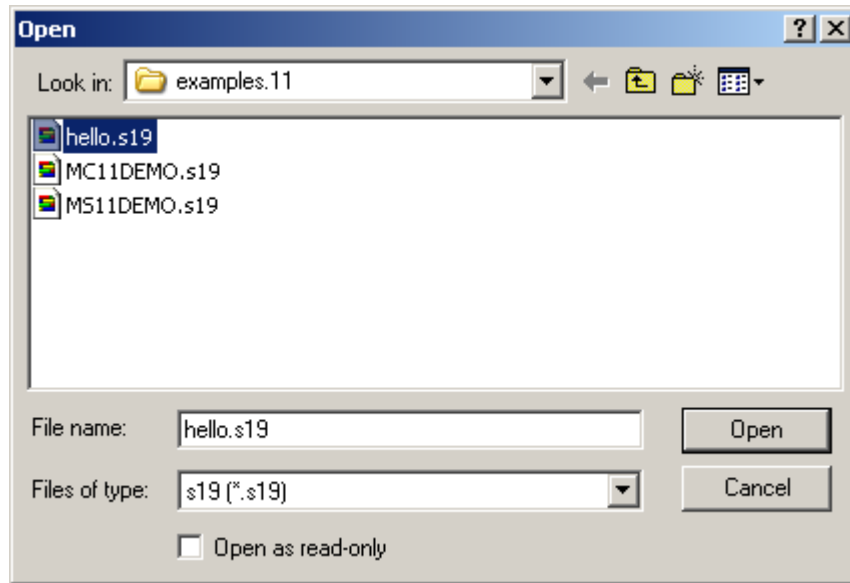
There are other type of memory options, external or internal. Click on Tools – Environment Options then Bootstrap Programming tab to see Memory type, etc..



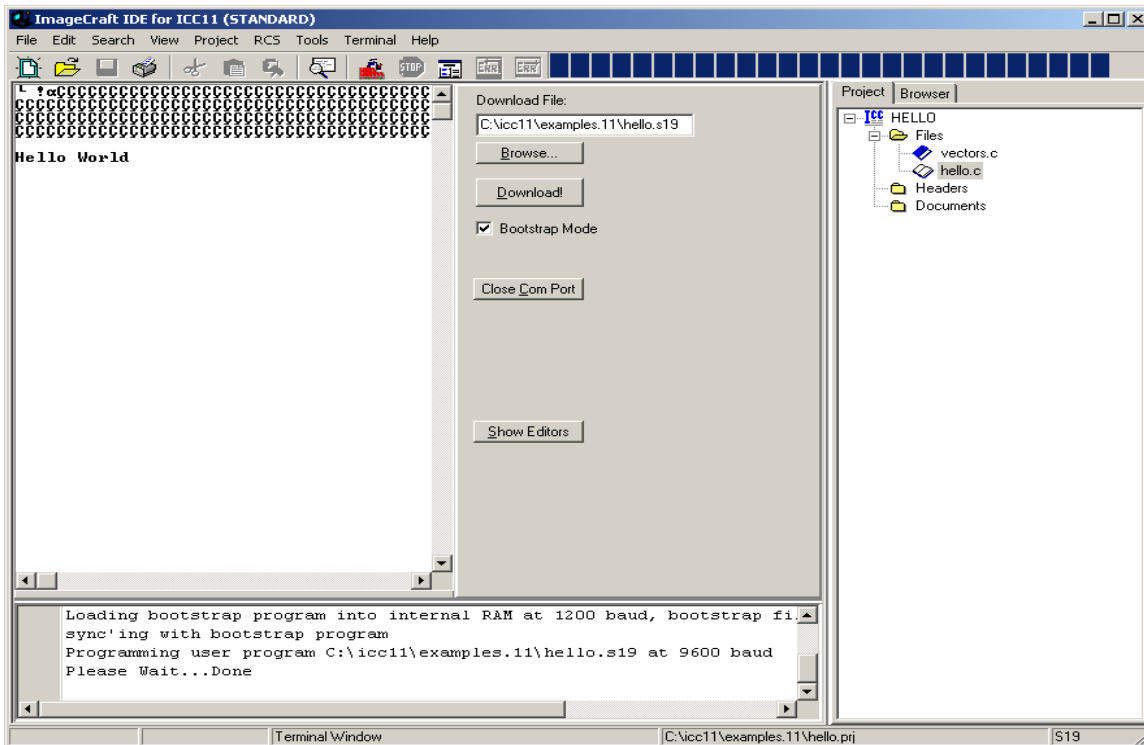
One can see the memory type options. Select the correct memory target. In this example it is External EEPROM.



Connect the serial cable to PC and to the target. Set boot switch to boot and power up module. In the middle of the IDE is the Browse button. Click button to locate *hello.s19* record as shown. Press *Open* button to accept selection.



To program the Bootstrap Mode needs to checked mark. Press Download button to initiate program as shown. A progress bar will be displayed as the file is being uploaded to module. At the bottom window a message Done is shown to indicate file transfer is finished.



Move write protect switch to *Prot* and *Boot/Run* switch to Run mode. Press the RESET button and the message Hello World will appear.

This concludes a basic demonstration of ICC11 with programming any HC11 product.