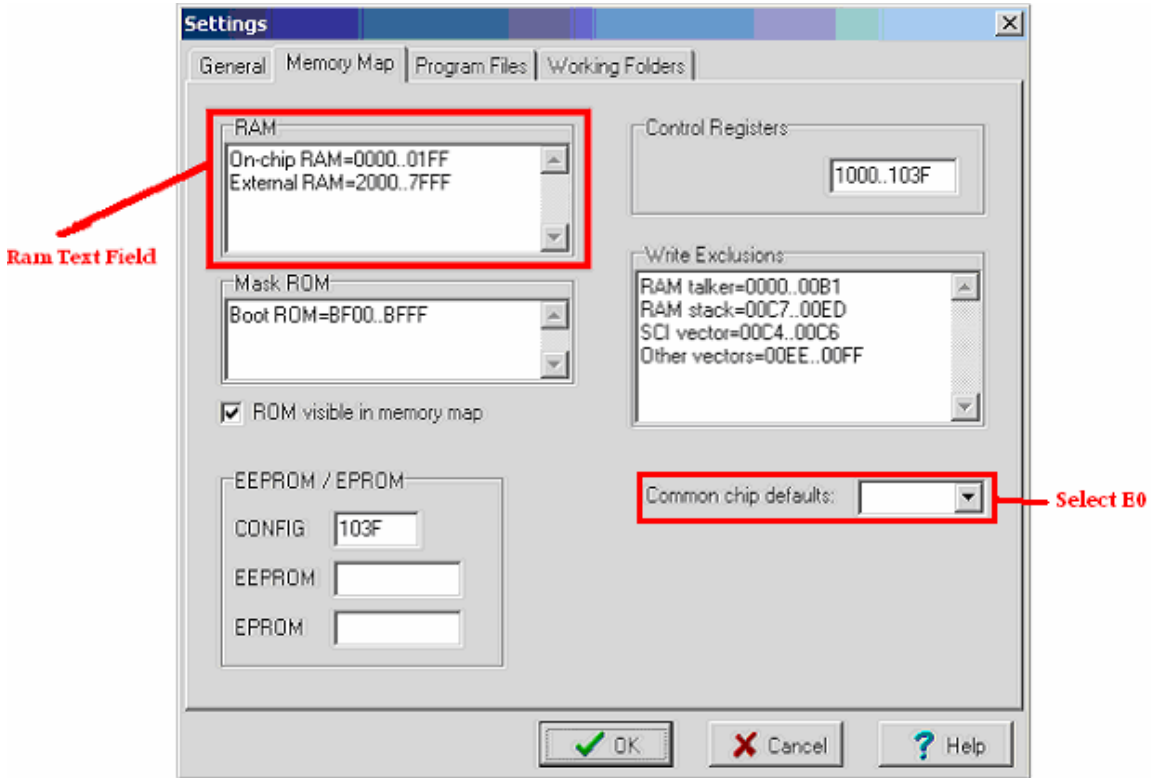


Getting started with JBug11 and Adapt11C24DX

Jbug11 is a Windows-based PCBug11 replacement. Jbug11 permits the editing of memory and registers as well as debugging and disassembly of an onboard program. Before you can start using Jbug11 with your Adapt11C24DX, you need to configure Jbug11 for use with a 68HC11E0. To do this you need to go to the Settings⇒Settings and then go to the **Memory Map** tab. Then under **Common chip defaults** select **E0**.

Depending on if you have external RAM or not the RAM settings will vary. Below is an example of what your settings may look like.

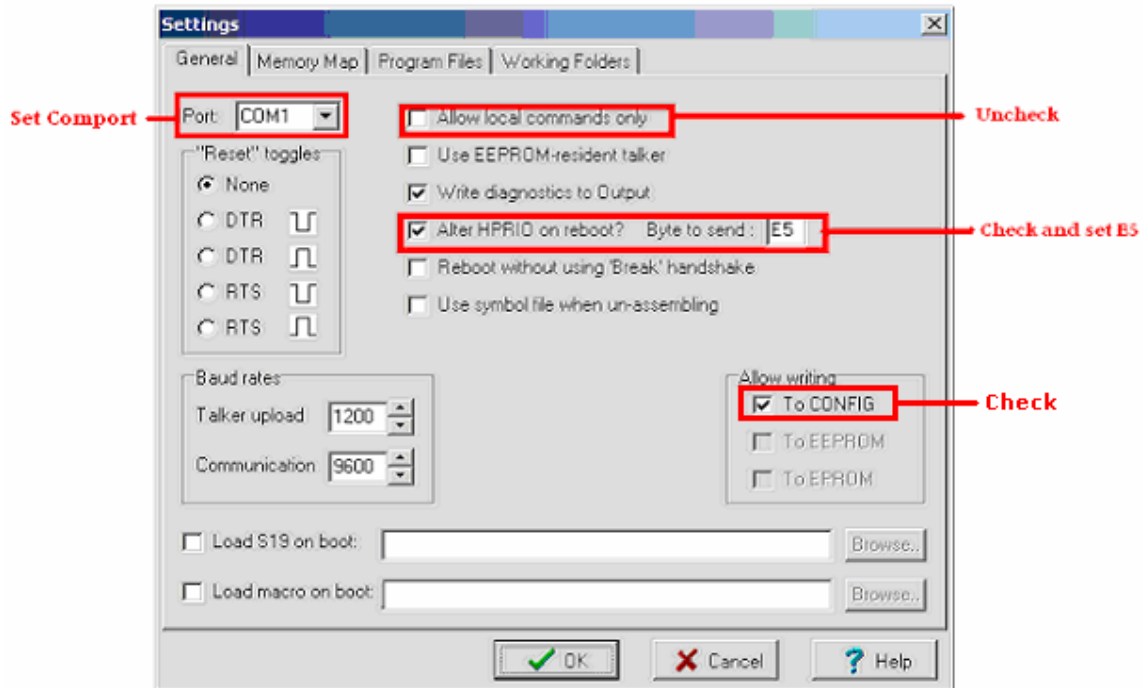


Use the following lookup table for the value you must type into the RAM text field. The On-Chip RAM is the same for all of the Adapt11C24DX family.

Adapt11C24DX 60K	External RAM=2000..7FFF External RAM=0200..0FFF	24K External RAM 3.5K External RAM 32K External EEPROM
Adapt11C24DX 8K		8K External EEPROM
Adapt11C24DX 32K		32K External EEPROM
Adapt11C24DXEVB	External RAM=8000..CFFF	20K External RAM
Adapt11C24DXEVB*	External RAM=8000..FFFF	32K External RAM

*With BUFFALO disabled

Now that the memory map has been setup for the target board there are some settings on the **General** tab that need to be changed. Because of the external memory and because of the port replacement chip (TEKMOS 68HC24) you need to check the **Alter HPRIO on reboot?** and set **Byte to send** to “E5”. At the same time you need to uncheck **Allow local commands only**, check **Allow writing To CONFIG**, and don't forget to change the **Port** to the correct com port connect to your Adapt11C24DX.



Next thing to do is to set the Talker and the Map file. To do this you need to go to the **Program Files** tab. Depending on if you have a turbo board or not the talker file you choose will vary, for the 8MHz version of Adapt11C24DX (standard) you need to pick the JBug_Talk_E.BOO. For the turbo board, you need to pick JBug_Talk_E(9.8304).BOO. Also if you are using a turbo board you need to go back to the **General** tab and change the baud rate, ***Talker Upload = 9600, Communication = 38400* Only for turbo boards!** The Map file is the same for both boards and is called JBug_Talk_A.map

Take note that external EEPROM cannot be programmed/modified with Jbug11 or Pcbug11, but you can use the MD command to display its content.

To restore the Config register back to factory settings for an 68HC11E0

Once you are done setting up JBug11 connect your Adapt11C24DX to the com port and move SW2 to BOOT. After resetting the board, you should see a blue progress bar at the bottom of the JBug11 window as the talker is loaded into RAM. It is a 2 step process to edit the Config register. First step is to turn off the write protection on the Config register by setting Bprot to 0F. Type

R bprot=0F

Then to set the Config register for a board without BUFFALO monitor in ROM, type

R config=0C

Or if your board has BUFFALO in ROM, type

R config=0F

Misc information about JBug11

To change any register use the R command and its name. For example, to turn on the LED on PA6 use **R porta=40**.

The manual for JBug11 is very complete and helpful. There is also a discussion group about JBug11. Visit http://freespace.virgin.net/john.beatty/Jbug11_main.html for more.

Toll-free: 1-877-963-8996 (USA and Canada) Phone: +1 (416) 963-8996 Fax: +1 (416) 963-9179
www.technologicalarts.com
©2006 [Technological Arts](http://www.technologicalarts.com)